



Storm Event Summary Report

City and County of Honolulu Kaelepulu Pond Monitoring

Site Location: Akipola Lined Channel

Sample ID: **Akipola**
Sample Date: 1/3/2015
Event Rainfall: 0.96-inches

Sampling Results Summary Table

	Parameter (units)	Analytical Result	Method
C O M P	Total Suspended Solids (mg/l)	45.5	<i>SM 2540 D</i>
	Ammonia Nitrogen (mg/l)	0.044	<i>EPA 350.1</i>
	Nitrate + Nitrite as Nitrogen (mg/l)	1.91	<i>EPA 353.2</i>
	Total Phosphorous (mg/l)	0.402	<i>EPA 365.3</i>

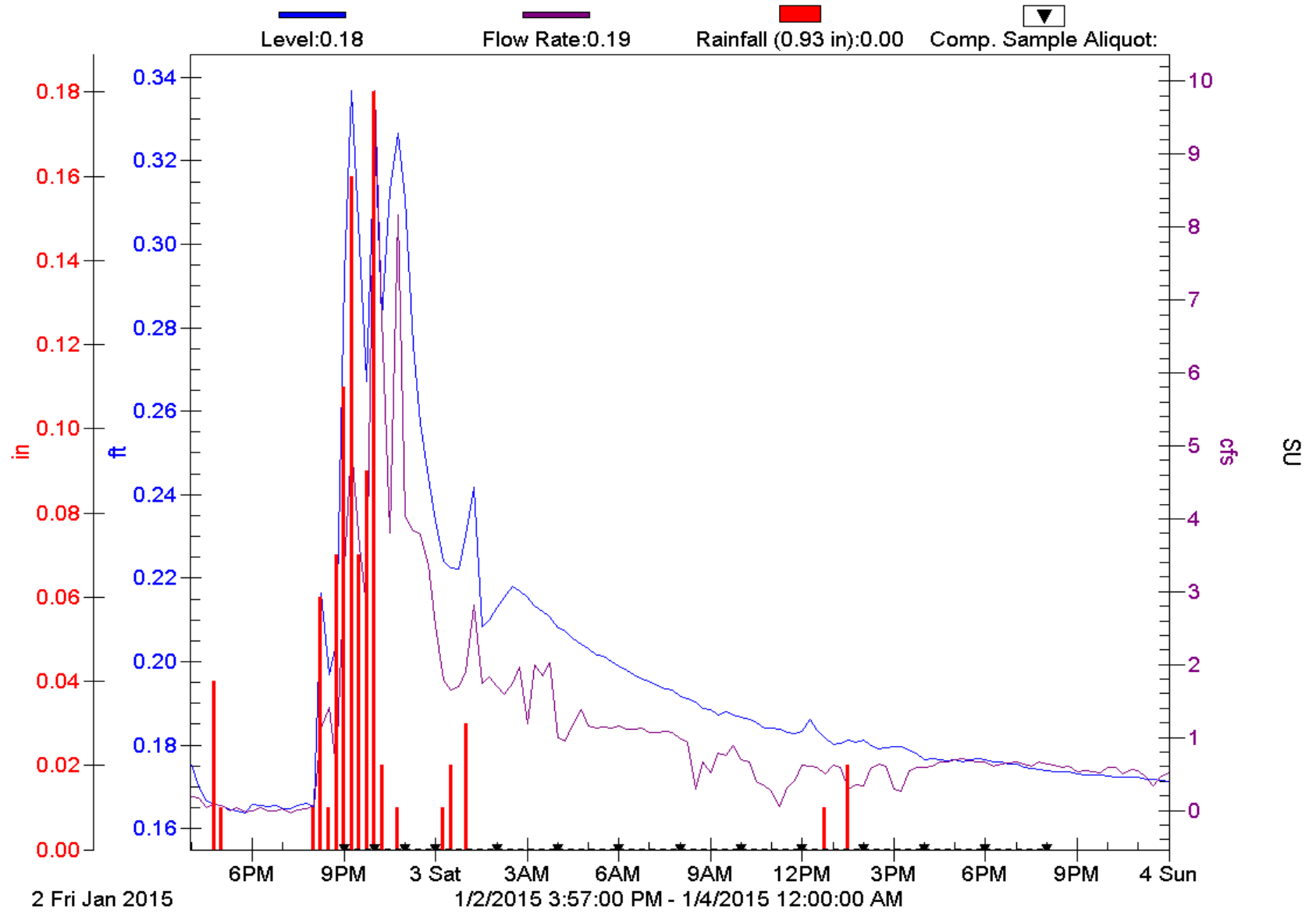
*Composite parameters analytical results represent event mean concentration (EMC).

Enclosures:

- 1. Storm Event Hydrograph with Rainfall Data and Composite Aliquot Sample Markers**
- 2. Storm event *Composite and Flow Calculation Form***
- 3. Columbia Analytical Services (CAS) Laboratory *COC and Analytical Report***

Akipola Lined Channel

Kaelepulu Watershed Study





Composite and Flow Calculation Form
City and County of Honolulu Kaelepulu Pond Monitoring

Site Location: Akipola Lined Channel

Sample ID: Akipola
 Sample Start Date: 1/2/2015
 Sample Team: EP/BB/BK
 Last Significant Rain Event: 12/30/2015 23:00
 Rain Event Start Date/Time: 1/2/2015 10:45
 Sampler Enable Date/Time: 1/2/2015 20:00
 Grab Sample Date/Time: Not collected due to lab closure.
 Composite Sample Date/Time: **1/3/2015 20:00**

Sampler Part A- Aliquot Interval (hrs): 1.00
 Sampler Part A- Number of Aliquots: 4

Sampler Part B- Aliquot Interval (hrs): 2.00
 Sampler Part B- Number of Aliquots: 10

Composite Sample- Total Time (hrs): 24.00
 Composite Sample- Total Aliquots: 14

Composite

Aliquot Period Date/Time	Aliquot (Bottle) Number	Aliquot Period Flow - Q _A (CF)	Aliquot Period Average Flow Intensity (CFS)	Aliquot Period % Q _A /Total Q (percent)	Volume for 2000 mL Composite Bottle (mL)	Volume for 1000 mL Composite Bottle (mL)	Volume for 500 mL Composite Bottle (mL)
1/2/2015 21:00	1	5796.12	1.610	6.39%	127.79	63.89	31.95
1/2/2015 22:00	2	19147.41	5.319	21.11%	422.15	211.07	105.54
1/2/2015 23:00	3	20531.52	5.703	22.63%	452.66	226.33	113.17
1/3/2015 0:00	4	12179.25	3.383	13.43%	268.52	134.26	67.13
1/3/2015 2:00	5	13634.37	1.894	7.52%	150.30	75.15	37.58
1/3/2015 4:00	6	12017.63	1.669	6.62%	132.48	66.24	33.12
1/3/2015 6:00	7	8326.39	1.156	4.59%	91.79	45.89	22.95
1/3/2015 8:00	8	7773.89	1.080	4.28%	85.70	42.85	21.42
1/3/2015 10:00	9	4995.56	0.694	2.75%	55.07	27.53	13.77
1/3/2015 12:00	10	2766.13	0.384	1.52%	30.49	15.25	7.62
1/3/2015 14:00	11	3525.32	0.490	1.94%	38.86	19.43	9.72
1/3/2015 16:00	12	3674.21	0.510	2.03%	40.50	20.25	10.13
1/3/2015 18:00	13	4811.09	0.668	2.65%	53.04	26.52	13.26
1/3/2015 20:00	14	4595.45	0.638	2.53%	50.66	25.33	12.66
Storm Total:	14	123774.34	25.198	100%	2000	1000	500