



Storm Event Summary Report

City and County of Honolulu Kaelepulu Pond Monitoring

Site Location: Akipola Lined Channel

Sample ID: **Akipola**

Sample Date: 2/3/2015

Event Rainfall: 0.28-inches

Sampling Results Summary Table

| | Parameter (units) | Analytical Result | Method |
|----------------------------|--------------------------------------|--------------------------|-----------------------|
| | Enterococcus (MPN/100 ml) | 7300 | <i>Grab--EPA 1600</i> |
| C O M P | Total Suspended Solids (mg/l) | 5 | <i>SM 2540 D</i> |
| | Ammonia Nitrogen (mg/l) | 0.065 | <i>EPA 350.1</i> |
| | Nitrate + Nitrite as Nitrogen (mg/l) | 0.194 | <i>EPA 353.2</i> |
| | Total Phosphorous (mg/l) | 0.183 | <i>EPA 365.3</i> |

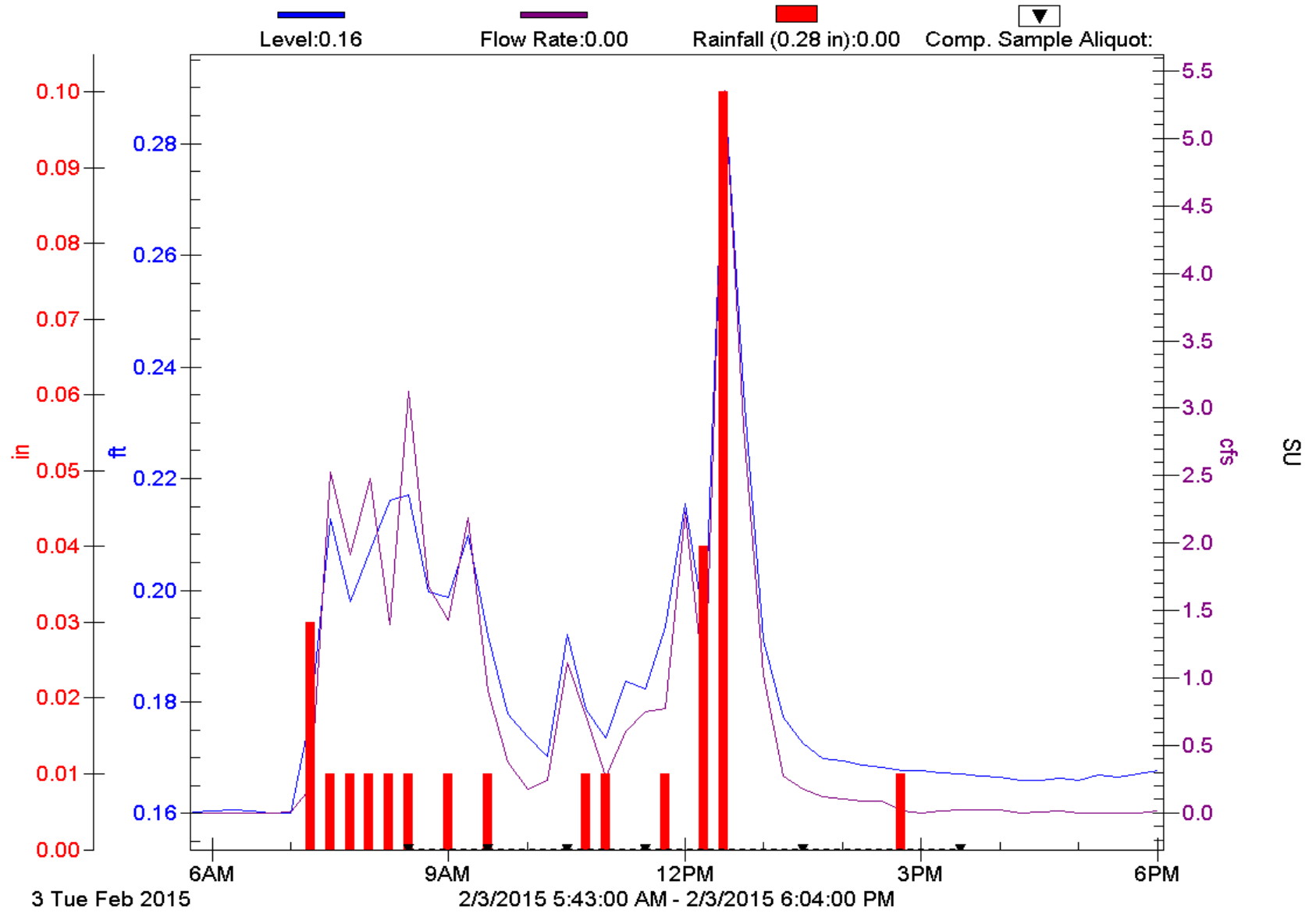
*Composite parameters analytical results represent event mean concentration (EMC).

Enclosures:

- 1. Storm Event Hydrograph with Rainfall Data and Composite Aliquot Sample Markers**
- 2. Storm event *Composite and Flow Calculation Form***
- 3. Columbia Analytical Services (CAS) Laboratory *COC and Analytical Report***

Akipola Lined Channel

Kaelepulu Watershed Study





Composite and Flow Calculation Form
City and County of Honolulu Kaelepulu Pond Monitoring

Site Location: **Akipola Lined Channel**

Sample ID: Akipola
 Sample Date: 2/3/2015
 Sample Team: BB/BK
 Last Significant Rain Event: 1/24/2015 22:15
 Rain Event Start Date/Time: 2/3/2015 7:15
 Sampler Enable Date/Time: 2/3/2015 7:30
 Grab Sample Date/Time: 2/3/2015 10:24
 Composite Sample Date/Time: **2/3/2015 15:30**

Sampler Part A- Aliquot Interval (hrs): 1.00
 Sampler Part A- Number of Aliquots: 4

Sampler Part B- Aliquot Interval (hrs): 2.00
 Sampler Part B- Number of Aliquots: 2

Composite Sample- Total Time (hrs): 8.00
 Composite Sample- Total Aliquots: 6

Composite

| Aliquot Period Date/Time | Aliquot (Bottle) Number | Aliquot Period Flow - Q _A (CF) | Aliquot Period Average Flow Intensity (CFS) | Aliquot Period % Q _A /Total Q (percent) | Volume for 2000 mL Composite Bottle (mL) | Volume for 1000 mL Composite Bottle (mL) | Volume for 500 mL Composite Bottle (mL) |
|--------------------------|-------------------------|---|---|--|--|--|---|
| 2/3/2015 8:30 | 1 | 8020 | 2.228 | 33.78% | 675.58 | 337.79 | 168.89 |
| 2/3/2015 9:30 | 2 | 5580 | 1.550 | 23.50% | 470.08 | 235.04 | 117.52 |
| 2/3/2015 10:30 | 3 | 1724 | 0.479 | 7.26% | 145.22 | 72.61 | 36.30 |
| 2/3/2015 11:30 | 4 | 2099 | 0.583 | 8.84% | 176.81 | 88.40 | 44.20 |
| 2/3/2015 13:30 | 5 | 12242 | 1.700 | 25.78% | 515.63 | 257.82 | 128.91 |
| 2/3/2015 15:30 | 6 | 396 | 0.055 | 0.83% | 16.69 | 8.35 | 4.17 |
| Storm Total: | 6 | 30061 | 6.595 | 100% | 2000 | 1000 | 500 |