



Storm Event Summary Report

City and County of Honolulu Kaelepulu Pond Monitoring

Site Location: Hele Lined Channel

Sample ID: Hele
Storm Date: 7/20/2014
Event Rainfall: 5.74-inches

Sampling Results Summary Table

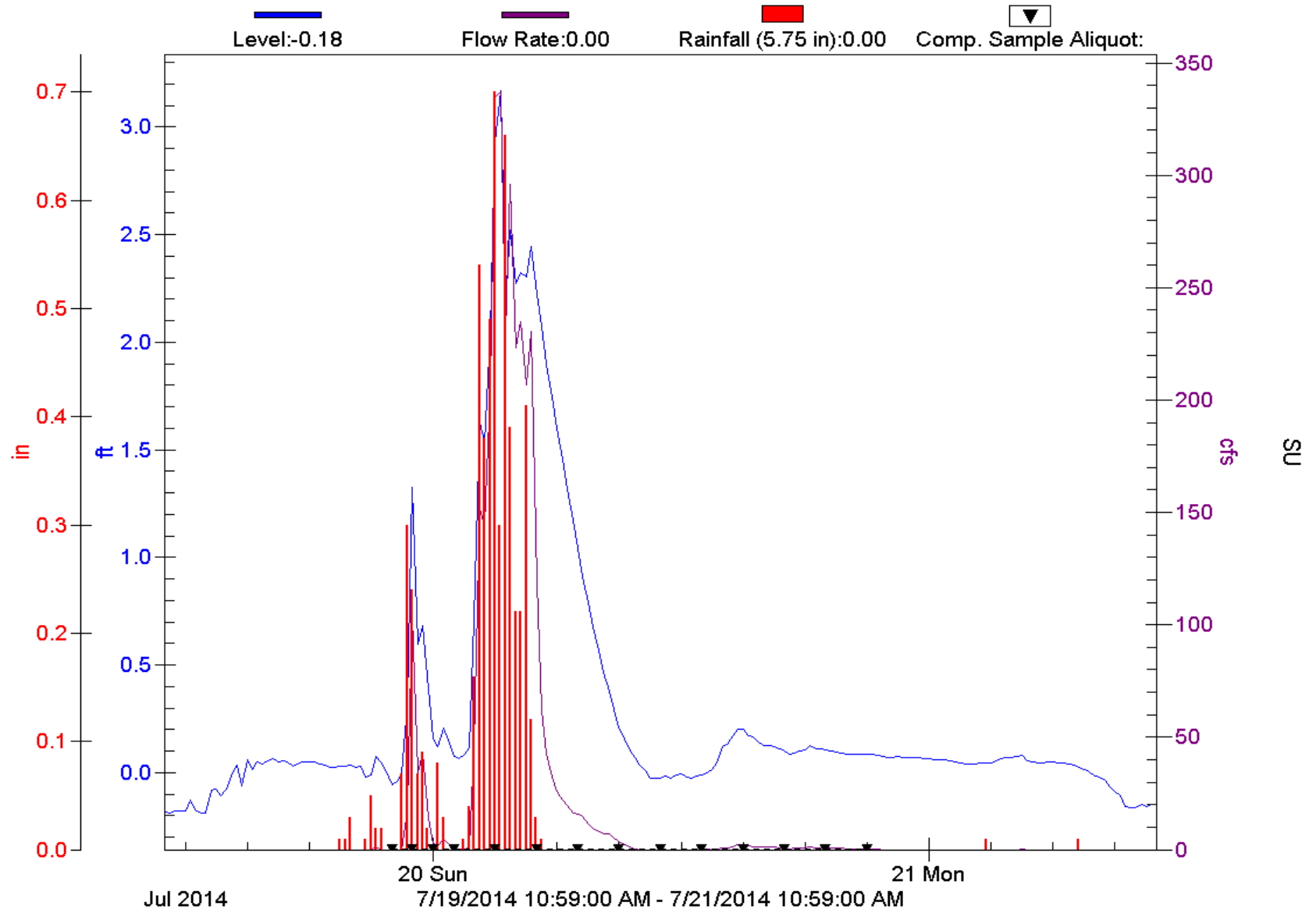
	Parameter (units)	Analytical Result	Method
	Enterococcus (MPN/100 ml)	> 2400	Grab--EPA 1600
C O M P	Total Suspended Solids (mg/l)	94.5	SM 2540 D
	Ammonia Nitrogen (mg/l)	0.105	EPA 350.1
	Nitrate + Nitrite as Nitrogen (mg/l)	1.88	EPA 353.2
	Total Phosphorous (mg/l)	0.492	EPA 365.3

*Composite parameters analytical results represent event mean concentration (EMC).

Enclosures:

1. Storm Event Hydrograph with Rainfall Data and Composite Aliquot Sample Markers
2. Storm event *Composite and Flow Calculation Form*
3. Columbia Analytical Services (CAS) Laboratory *COC and Analytical Report*

Hele Lined Channel Kaelepulu Watershed Study





Composite and Flow Calculation Form
City and County of Honolulu Kaelepulu Pond Monitoring

Site Location: **Hele Lined Channel**

Sample ID: Hele
 Sample Date: 7/20/2014
 Sample Team: BB/BK
 Last Significant Rain Event: 6/20/2014 9:15
 Rain Event Start Date/Time: 7/19/2014 19:30
 Sampler Enable Date/Time: 7/19/2014 21:05
Grab Sample Date/Time: 7/20/2014 0:40

Composite Sample Date/Time:	7/20/2014 21:05
Sampler Part A- Aliquot Interval (hrs):	1.00
Sampler Part A- Number of Aliquots:	4
Sampler Part B- Aliquot Interval (hrs):	2.00
Sampler Part B- Number of Aliquots:	10
Composite Sample- Total Time (hrs):	24.00
Composite Sample- Total Aliquots:	14

Composite

Aliquot Period Date/Time	Aliquot (Bottle) Number	Aliquot Period Flow - Q _A (CF)	Aliquot Period Average Flow Intensity (CFS)	Aliquot Period % Q _A /Total Q (percent)	Volume for 2000 mL Composite Bottle (mL)	Volume for 1000 mL Composite Bottle (mL)	Volume for 500 mL Composite Bottle (mL)
7/19/2014 22:05	1	1095	0.304	0.07%	1.37	0.69	0.34
7/19/2014 23:05	2	109795	30.498	6.89%	137.87	68.94	34.47
7/20/2014 0:05	3	84565	23.490	5.31%	106.19	53.10	26.55
7/20/2014 1:05	4	8137	2.260	0.51%	10.22	5.11	2.55
7/20/2014 3:05	5	792203	110.028	24.87%	497.40	248.70	124.35
7/20/2014 5:05	6	1688013	234.446	52.99%	1059.86	529.93	264.96
7/20/2014 7:05	7	213235	29.616	6.69%	133.88	66.94	33.47
7/20/2014 9:05	8	59439	8.255	1.87%	37.32	18.66	9.33
7/20/2014 11:05	9	2858	0.397	0.09%	1.79	0.90	0.45
7/20/2014 13:05	10	0	0.000	0.00%	0.00	0.00	0.00
7/20/2014 15:05	11	6272	0.871	0.20%	3.94	1.97	0.98
7/20/2014 17:05	12	7733	1.074	0.24%	4.86	2.43	1.21
7/20/2014 19:05	13	5181	0.720	0.16%	3.25	1.63	0.81
7/20/2014 21:05	14	3237	0.450	0.10%	2.03	1.02	0.51
Storm Total:	14	2981761	442.410	100%	2000	1000	500