



Storm Event Summary Report

City and County of Honolulu Kaelepulu Pond Monitoring

Site Location: Kaopa Lined Channel

Sample ID: Kaopa
Sample Date: 8/8/2014
Event Rainfall: 0.54-inches

Sampling Results Summary Table

	Parameter (units)	Analytical Result	Method
C O M P	Total Suspended Solids (mg/l)	43	<i>SM 2540 D</i>
	Ammonia Nitrogen (mg/l)	<1	<i>EPA 350.1</i>
	Nitrate + Nitrite as Nitrogen (mg/l)	1.12	<i>EPA 353.2</i>
	Total Phosphorous (mg/l)	0.288	<i>EPA 365.3</i>

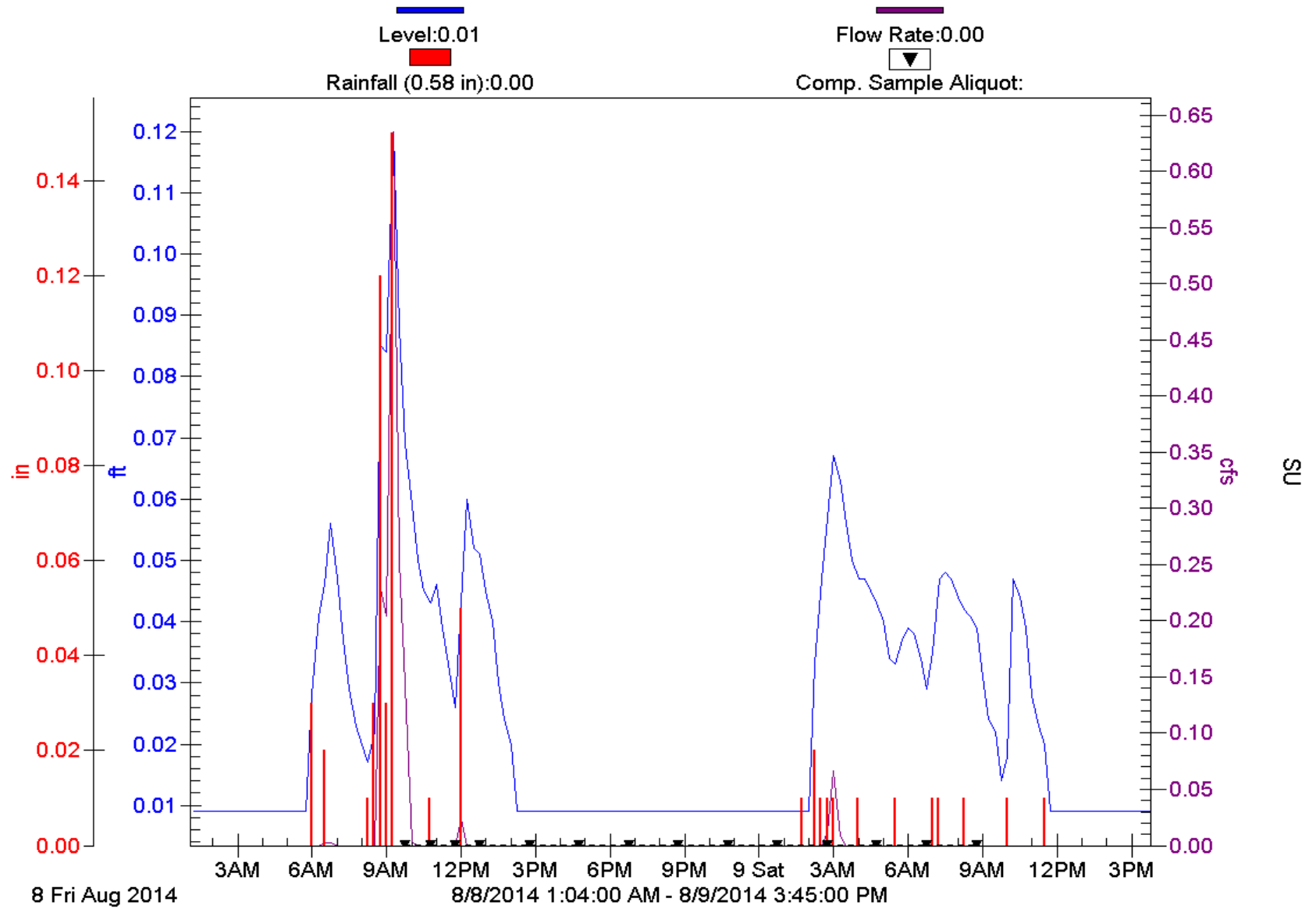
*Composite parameters analytical results represent event mean concentration (EMC).

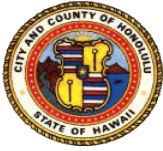
Enclosures:

- 1. Storm Event Hydrograph with Rainfall Data and Composite Aliquot Sample Markers**
- 2. Kaelepulu Storm Water Monitoring Field Sheets**
- 3. Storm event Composite and Flow Calculation Form**
- 4. Columbia Analytical Services (CAS) Laboratory COC and Analytical Report**

Kaopa Lined Channel

Kaelepulu Watershed Study





Composite and Flow Calculation Form
City and County of Honolulu Kaelepu Pond Monitoring

Site Location: **Kaopa Lined Channel**

Sample ID: Kaopa
 Sample Start Date: 8/8/2014
 Sample Team: BB/BK
 Last Significant Rain Event: 7/22/2014 17:00
 Rain Event Start Date/Time: 8/8/2014 4:15
 Sampler Enable Date/Time: 8/8/2014 8:36
 Grab Sample Date/Time: Not collected due to lab closure.
 Composite Sample Date/Time: **8/9/2014 4:36**

Sampler Part A- Aliquot Interval (hrs):	1.00
Sampler Part A- Number of Aliquots:	4
Sampler Part B- Aliquot Interval (hrs):	2.00
Sampler Part B- Number of Aliquots:	8
Composite Sample- Total Time (hrs):	24.00
Composite Sample- Total Aliquots:	12

Composite

Aliquot Period Date/Time	Aliquot (Bottle) Number	Aliquot Period Flow - Q _A (CF)	Aliquot Period Average Flow Intensity (CFS)	Aliquot Period % Q _A /Total Q (percent)	Volume for 2000 mL Composite Bottle (mL)	Volume for 1000 mL Composite Bottle (mL)	Volume for 500 mL Composite Bottle (mL)
8/8/2014 9:36	1	1112	0.309	94.64%	1892.71	946.36	473.18
8/8/2014 10:36	2	3	0.001	0.23%	4.60	2.30	1.15
8/8/2014 11:36	3	0	0.000	0.00%	0.00	0.00	0.00
8/8/2014 12:36	4	22	0.006	1.84%	36.78	18.39	9.20
8/8/2014 14:36	5	0	0.000	0.00%	0.00	0.00	0.00
8/8/2014 16:36	6	0	0.000	0.00%	0.00	0.00	0.00
8/8/2014 18:36	7	0	0.000	0.00%	0.00	0.00	0.00
8/8/2014 20:36	8	0	0.000	0.00%	0.00	0.00	0.00
8/8/2014 22:36	9	0	0.000	0.00%	0.00	0.00	0.00
8/9/2014 0:36	10	0	0.000	0.00%	0.00	0.00	0.00
8/9/2014 2:36	11	11	0.001	0.46%	9.20	4.60	2.30
8/9/2014 4:36	12	67	0.009	2.84%	56.70	28.35	14.18
Storm Total:	12	1213	0.326	100%	2000	1000	500