



Storm Event Summary Report

City and County of Honolulu Kaelepulu Pond Monitoring

Site Location: Kaopa Lined Channel

Sample ID: Kaopa 1-7
Sample Date: 10/18/2019
Event Rainfall: 3.89-inches

Sampling Results Summary Table

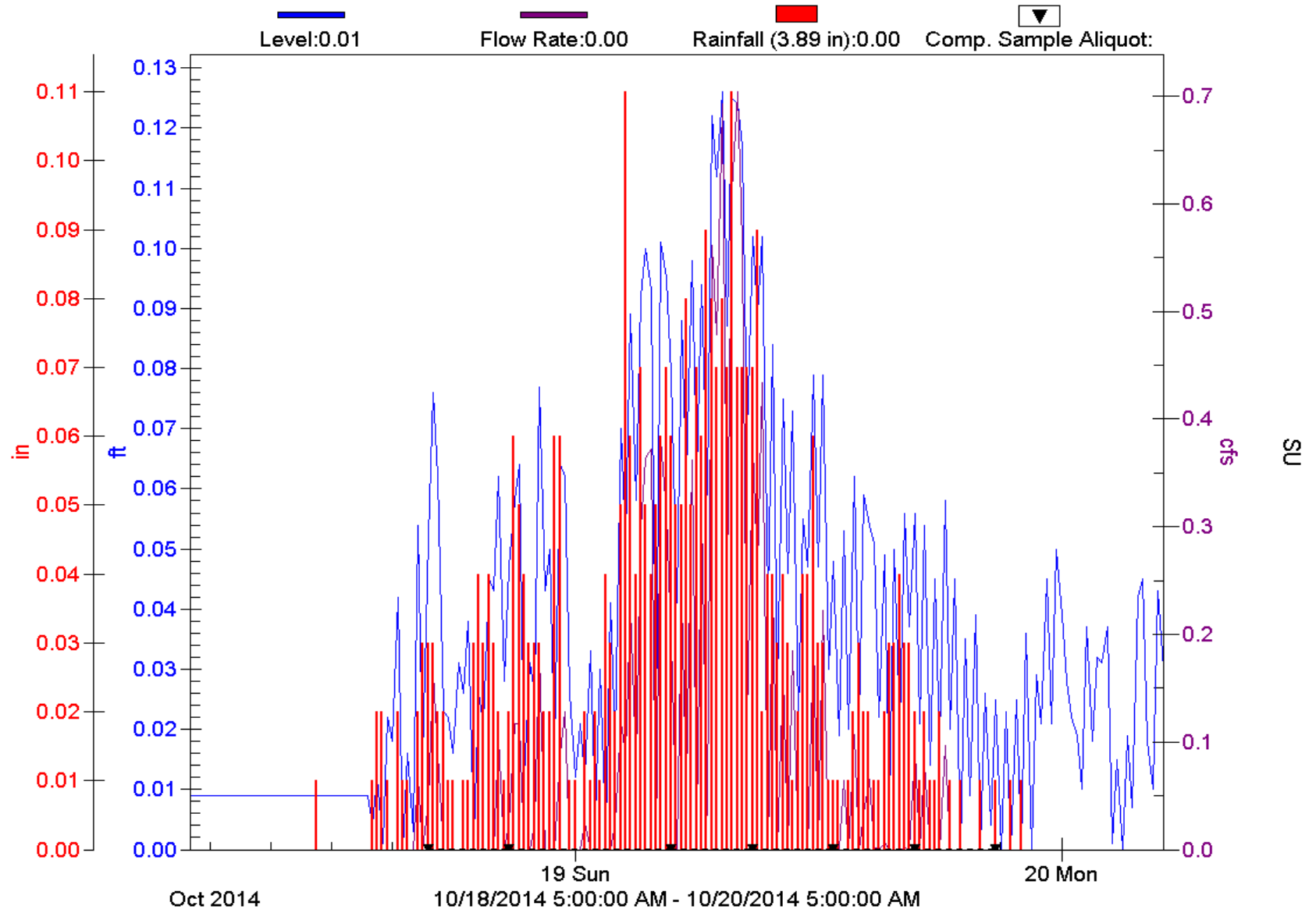
	Parameter (units)	Analytical Result	Method
	Storm Total Flow (CF)	10142	<i>Flow Meter Calculation</i>
C O M P 1	Total Suspended Solids (mg/l)	45.3	<i>SM 2540 D</i>
	Ammonia Nitrogen (mg/l)	<0.05	<i>EPA 350.1</i>
	Nitrate + Nitrite as Nitrogen (mg/l)	0.729	<i>EPA 353.2</i>
	Total Phosphorous (mg/l)	0.226	<i>EPA 365.3</i>
C O M P 2	Total Suspended Solids (mg/l)	35	<i>SM 2540 D</i>
	Ammonia Nitrogen (mg/l)	<0.05	<i>EPA 350.1</i>
	Nitrate + Nitrite as Nitrogen (mg/l)	0.286	<i>EPA 353.2</i>
	Total Phosphorous (mg/l)	0.215	<i>EPA 365.3</i>
C O M P 3	Total Suspended Solids (mg/l)	30	<i>SM 2540 D</i>
	Ammonia Nitrogen (mg/l)	<0.05	<i>EPA 350.1</i>
	Nitrate + Nitrite as Nitrogen (mg/l)	0.52	<i>EPA 353.2</i>
	Total Phosphorous (mg/l)	0.134	<i>EPA 365.3</i>
C O M P 4	Total Suspended Solids (mg/l)	22.5	<i>SM 2540 D</i>
	Ammonia Nitrogen (mg/l)	<0.05	<i>EPA 350.1</i>
	Nitrate + Nitrite as Nitrogen (mg/l)	0.507	<i>EPA 353.2</i>
	Total Phosphorous (mg/l)	0.138	<i>EPA 365.3</i>
C O M P 5	Total Suspended Solids (mg/l)	16.5	<i>SM 2540 D</i>
	Ammonia Nitrogen (mg/l)	<0.05	<i>EPA 350.1</i>
	Nitrate + Nitrite as Nitrogen (mg/l)	0.513	<i>EPA 353.2</i>
	Total Phosphorous (mg/l)	0.104	<i>EPA 365.3</i>
C O M P 6	Total Suspended Solids (mg/l)	<5	<i>SM 2540 D</i>
	Ammonia Nitrogen (mg/l)	<0.05	<i>EPA 350.1</i>
	Nitrate + Nitrite as Nitrogen (mg/l)	0.758	<i>EPA 353.2</i>
	Total Phosphorous (mg/l)	0.083	<i>EPA 365.3</i>
C O M P 7	Total Suspended Solids (mg/l)	5	<i>SM 2540 D</i>
	Ammonia Nitrogen (mg/l)	<0.05	<i>EPA 350.1</i>
	Nitrate + Nitrite as Nitrogen (mg/l)	0.47	<i>EPA 353.2</i>
	Total Phosphorous (mg/l)	0.075	<i>EPA 365.3</i>

Enclosures:

1. Storm Event Hydrograph with Rainfall Data and Composite Aliquot Sample Markers
2. Storm event *Composite and Flow Calculation Form*
3. Columbia Analytical Services (CAS) Laboratory *COC and Analytical Report*

Kaopa Lined Channel

Kaelepulu Watershed Study





Composite and Flow Calculation Form
City and County of Honolulu Kaelepu Pond Monitoring

Site Location: Kaopa Lined Channel

Sample ID: Kaopa 1-7
 Sample Start Date: 10/18/2014
 Sample Team: BB/BK
 Last Significant Rain Event: 10/5/2014 15:15
 Rain Event Start Date/Time: 10/18/2014 11:15
 Sampler Enable Date/Time: 10/18/2014 15:45
 Grab Sample Date/Time: Not collected due to lab closure.
 Composite Sample Date/Time: *Seven (7) Interval aliquots submitted from storm event at sample date/times below
 Composite Sample- Total Time (hrs): 29.00
 Composite Sample- Total Aliquots: 7

Composite

Aliquot Period Date/Time	Aliquot (Bottle) Number	Aliquot Period Flow - Q _A (CF)	Aliquot Total Time (Hours:Mins)	Aliquot Period Average Flow Intensity (CFS)	Aliquot Period % Q _A /Total Q (percent)
10/18/2014 16:45	1	100.80	1:00	0.028	4.32%
10/18/2014 20:45	2	960.30	4:00	0.067	10.28%
10/19/2014 4:45	3	2214.00	8:00	0.077	11.86%
10/19/2014 8:45	4	4832.10	4:00	0.336	51.75%
10/19/2014 12:45	5	1539.00	4:00	0.107	16.48%
10/19/2014 16:45	6	336.60	4:00	0.023	3.60%
10/19/2014 20:45	7	159.30	4:00	0.011	1.71%
Storm Total:	7	10142.10		0.648	100%