



Storm Event Summary Report

City and County of Honolulu Kaelepulu Pond Monitoring

Site Location: Keolu Lined Channel

Sample ID: Keolu
Sample Date: 8/8/2014
Event Rainfall: 0.54-inches

Sampling Results Summary Table

	Parameter (units)	Analytical Result	Method
C O M P	Total Suspended Solids (mg/l)	30	SM 2540 D
	Ammonia Nitrogen (mg/l)	<1	EPA 350.1
	Nitrate + Nitrite as Nitrogen (mg/l)	0.19	EPA 353.2
	Total Phosphorous (mg/l)	0.166	EPA 365.3

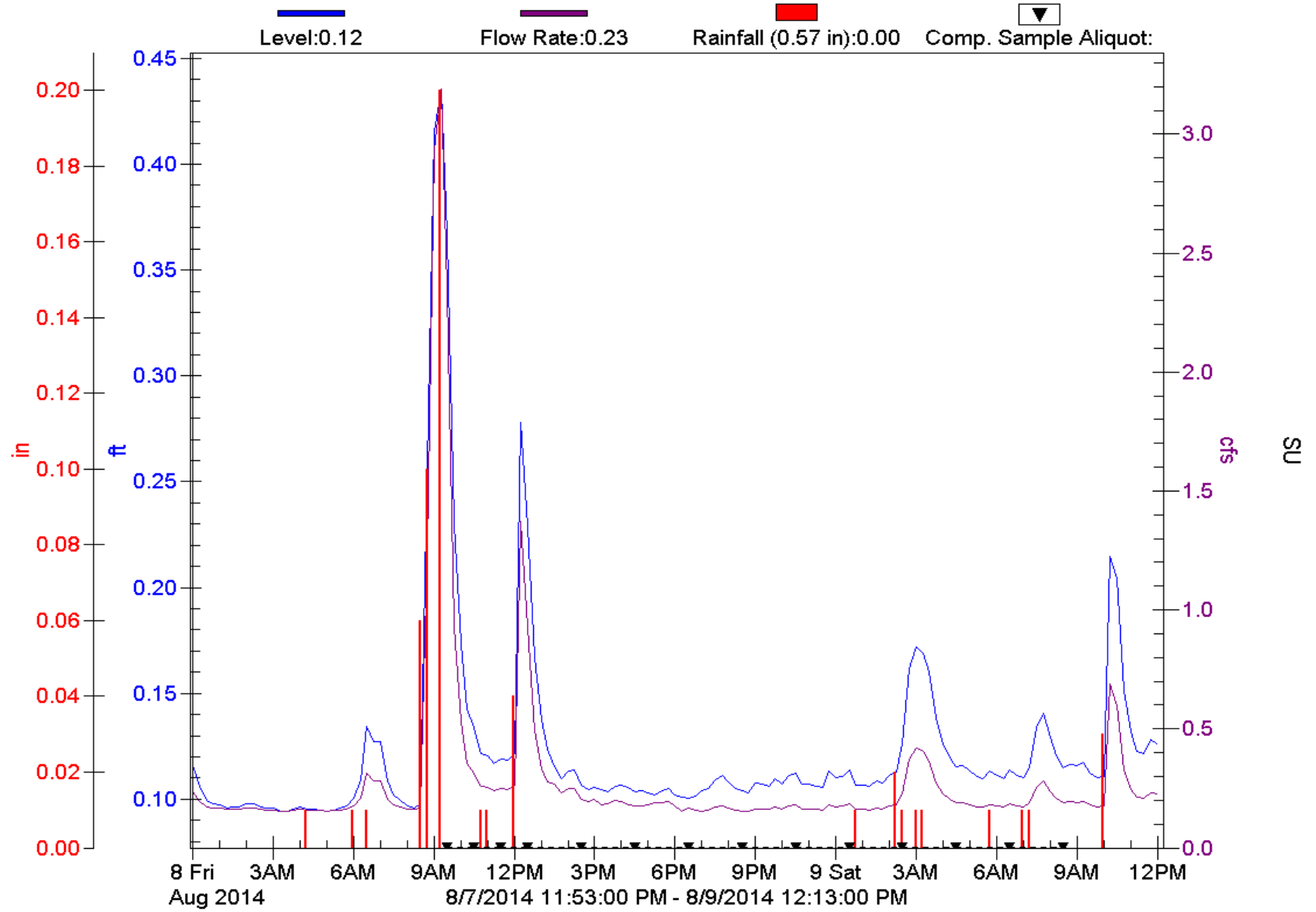
*Composite parameters analytical results represent event mean concentration (EMC).

Enclosures:

- 1. Storm Event Hydrograph with Rainfall Data and Composite Aliquot Sample Markers**
- 2. Kaelepulu Storm Water Monitoring Field Sheets**
- 3. Storm event Composite and Flow Calculation Form**
- 4. Columbia Analytical Services (CAS) Laboratory COC and Analytical Report**

Keolu Lined Channel

Kaelepulu Watershed Study





Composite and Flow Calculation Form
City and County of Honolulu Kaelepu Pond Monitoring

Site Location: **Keolu Lined Channel**

Sample ID: Keolu
 Sample Start Date: 8/8/2014
 Sample Team: BB/BK
 Last Significant Rain Event: 7/22/2014 17:00
 Rain Event Start Date/Time: 8/8/2014 4:15
 Sampler Enable Date/Time: 8/8/2014 8:30
 Grab Sample Date/Time: Not collected due to lab closure.
 Composite Sample Date/Time: **8/9/2014 9:30**

Sampler Part A- Aliquot Interval (hrs):	1.00
Sampler Part A- Number of Aliquots:	4
Sampler Part B- Aliquot Interval (hrs):	2.00
Sampler Part B- Number of Aliquots:	10
Composite Sample- Total Time (hrs):	24.00
Composite Sample- Total Aliquots:	14

Composite

Aliquot Period Date/Time	Aliquot (Bottle) Number	Aliquot Period Flow - Q _A (CF)	Aliquot Period Average Flow Intensity (CFS)	Aliquot Period % Q _A /Total Q (percent)	Volume for 2000 mL Composite Bottle (mL)	Volume for 1000 mL Composite Bottle (mL)	Volume for 500 mL Composite Bottle (mL)
8/8/2014 9:30	1	8748	2.430	42.12%	842.33	421.17	210.58
8/8/2014 10:30	2	1917	0.533	9.23%	184.62	92.31	46.16
8/8/2014 11:30	3	897	0.249	4.32%	86.39	43.20	21.60
8/8/2014 12:30	4	2526	0.702	12.16%	243.20	121.60	60.80
8/8/2014 14:30	5	2071	0.288	4.98%	99.69	49.85	24.92
8/8/2014 16:30	6	1364	0.189	3.28%	65.67	32.84	16.42
8/8/2014 18:30	7	1282	0.178	3.09%	61.72	30.86	15.43
8/8/2014 20:30	8	1162	0.161	2.80%	55.96	27.98	13.99
8/8/2014 22:30	9	1195	0.166	2.88%	57.55	28.78	14.39
8/9/2014 0:30	10	0	0.000	0.00%	0.00	0.00	0.00
8/9/2014 2:30	11	1259	0.175	3.03%	60.64	30.32	15.16
8/9/2014 4:30	12	2209	0.307	5.32%	106.37	53.18	26.59
8/9/2014 6:30	13	1288	0.179	3.10%	61.99	30.99	15.50
8/9/2014 8:30	14	1534	0.213	3.69%	73.87	36.94	18.47
Storm Total:	14	27453	5.770	100%	2000	1000	500